

INSIDE THIS ISSUE:

ETG STUDENT & YOUNG INVESTIGATOR AWARDS	2
ABSTRACT SUBMISSION	2
ETG SYMPOSIUM	3
OTHER SESSIONS OF INTEREST IN EB2007	4
ELECTIONS	5
STEERING COMMITTEE	5

MESSAGE FROM THE CHAIR

After 2 years of great and dedicated service, last year during the Experimental Biology Meeting in San Francisco, Catherine Fuller turned the Epithelial Transport Group, along with its ion channels and transporters, to Neil Bradbury and myself. Neil and I hope to do as well as Catherine during her tenure as the Chair of the ETG.

This year to simplify matters the Steering Committee decided to divide the Program for the 2007 EB Meeting into two broad categories that really define our group: a) Ion channels and b) Transporters. We will have 2 sessions, whose speakers will be selected from abstracts submitted for this meeting. The Ion Channels session will be chaired by Peter Snyder and co-chaired by Estelle Cormet-Boyaka. The Transporters session will be chaired by Nuria Pastor-Soler and co-chaired by Alicia McDonough.

In addition we will also have a Featured Symposium on *Epithelial Development, Disease and Regeneration*. The session will be chaired by Caroline Sussman and the invited speakers include Ian Drummond, Todd Evans, Michael Levin, and Marc Hammerman.

If you have any suggestions for the EB 2008 meeting this is the time to let us know. We would definitely like to receive all of the proposals at least 1 month before the EB 2007 meeting so that we can circulate your ideas around.

In addition we will also have elections soon to expand the size of the ETG Steering Committee which hopefully will also yield new and fresh ideas for our future activities. So far I am pleased to let you know that several well known ion channel and transport oriented investigators have agreed to be considered for this task including, in alphabetical order, Michael Caplan, Rebecca Hughey, Eleanor Lederer, Lisa Satlin, Peter Snyder, and Alan Yu. The elections will be held later on this year.

I do encourage you and your lab, and especially the graduate students and post-doctoral fellows to submit your abstracts in time for the November 8, 2006 deadline for EB 2007 and the ETG award submission deadline on November 17. Please be aware of this year's simplified and targeted program categories.

See you in D.C.

Moshe



ETG STUDENT AND YOUNG INVESTIGATOR AWARD

The Epithelial Transport Group Student and Young Investigator Awards (\$250) will be given to one pre-doctoral and one post-doctoral candidate for outstanding research in a topic related to epithelial physiology. To be eligible for the award, the candidate must be the first author on a abstract submitted under one of the headings outlined under the Epithelial Transport Group topic categories at the Experimental Biology 2007 meeting. For the post-doctoral awards, the candidate must hold either a Ph.D., M.D., D.V.M., or other comparable higher degree. Applicants should submit a copy of their abstract, a completed APS certification form and a one-page CV to:

Moshe Levi
Dept. Medicine
University of Colorado Health Sciences
Centre
4200 E Ninth Avenue, C281
Denver, CO 80262

Congratulations to last year's winners

Mr. P. Malreddy, Kansas St. Univ

Dr. J. Bomberger, Dartmouth College

All abstracts will be reviewed by the ETG steering committee.

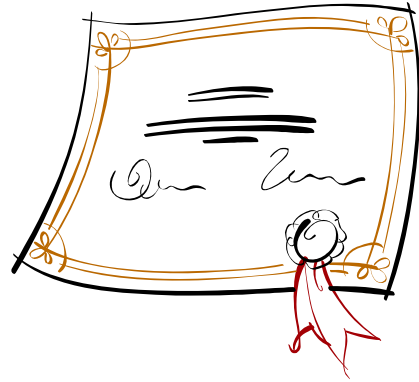
Deadline for applications is November 17, 2006. Please note that a candidate can submit no more than **one** abstract for award consideration.

Categories are # 1130 and 1131

Forms and further details can be obtained at:

www.the-aps.org/meetings/eb07/awards

Those abstracts selected for incorporation in a featured topic will be presented **twice**, once in the oral featured topic session and also as a poster.



The poster session categories are:

1130-APS Epithelial ion and water channels

1131-APS Epithelial transporters, exchangers and pumps



EXPERIMENTAL BIOLOGY 2007

Experimental Biology 2007 will take place April 28-May 2 at the Washington Convention Centre, Washington DC.

ABSTRACT SUBMISSION

Please be advised that the abstract submission deadline is November 8, 2006. The rules and guidelines for submitting an abstract, as well as an alphabetical list of the topic categories can be found at the meeting website:

www.eb2007.org



ETG SYMPOSIUM:

This years ETG sponsored symposium is “**Epithelial development, disease and regeneration.**”

Chaired by **Caroline Sussman**

It has been predicted that regenerative medicine will revolutionize the clinical practice of medicine on a level similar to that by development of antibiotics. Clearly the ability to grow new healthy tissue either within a patient or in the lab for transplantation from a patient’s own cells would save many lives and/or improve quality of life for those afflicted with a wide range of diseases. In response to this exciting developing area of research and medicine many institutions have already initiated or have plans to initiate centers for regenerative medicine usually incorporating some component of embryonic development and stem cell research.

The Symposium pro-

posed here will address the issue of epithelial regeneration from a variety of perspectives contributing to the development of this field and highlight the relevance of Physiology. Three of the four speakers have confirmed their willingness to participate. Areas represented by the three confirmed speakers include: 1) basic research on embryonic development in a model organism (zebrafish, Todd Evans); 2) influence of biophysical tissue properties on embryonic development and regeneration in several models (Mike Levin); and 3) applied studies directly examining organ regeneration in mammalian models (Marc Hammerman). The proposed fourth speaker will add the dimension of disease-oriented basic studies of embryonic development in a model organism (zebrafish).

The proposed speakers were selected in an effort to highlight the relevance of Physiology specifically to the field of organ regeneration, since it is evolving in such a way that its relevance to the

disciplines of Anatomy and Cell Biology is more immediately apparent. Indeed, at Experimental Biology 2006 there were several sessions on regeneration hosted by the American Society for Anatomists and the ASBMB, but none specifically on regeneration hosted by the APS. Of course this is ridiculous since a regenerated organ is useless if it does not function properly in an intact organism. However, if the APS ignores the field of regenerative medicine, it will evolve without involving those who consider themselves classical Physiologists, and a major opportunity for the APS to re-assert the importance of Physiology to the forefront of medical research will be lost. In conclusion, this Symposium will address one of the most exciting areas of research and medicine from a variety of perspectives by some of the most prominent investigators in the field, and highlights the relevance of Physiology to this area of research.

**Epithelial
development,
disease and
regeneration**



Experimental Biology 2007
Washington DC
April 28-May 2
Washington Convention
Centre

Epithelial development, disease and regeneration:

Sponsored by the APS Epithelial Transport Group

Chaired **Caroline R. Sussman**

Zebrafish as a model of kidney development and disease

Iain A. Drummond, Ph.D., Mass. General Hospital Renal Unit, 149 13th Street, Charlestown, MA 02129

Gata factors and development of gut-derivative organs in zebrafish

Todd Evans, Ph.D., Developmental & Molecular Biology, Albert Einstein College of Medicine, 1300 Morris Park Ave., Bronx, NY 10461

Bioelectrical control of embryonic development and regeneration

Michael Levin, Ph.D., Director, Forsyth Center for Regenerative and Developmental Biology, The Forsyth Institute & Dept. Dev Biol, The Harvard Medical School, Boston, MA 02115

Pancreas and kidney regeneration.

Marc R. Hammerman, M.D., Director, Renal Division, Department of Medicine, and Cell Biology and Physiology, Washington University School of Medicine, St. Louis, MO 63110

HENRY PICKERING BOWDITCH AWARD

Although the Henry Pickering Bowditch award is not sponsored by the ETG, we are pleased that one of the past members of our ETG steering committee, Jim Stockand is the 2007 awardee. We join in congratulating Jim on this achievement.

SYMPOSIA OF INTEREST TO ETG MEMBERS

Workshop on Emerging Techniques for Ion Channel studies.

T.C.Hwang and Douglas Krafte

Interrelations between Transcellular Ion Transport function and paracellular Tight Junction Properties in Lung Epithelial and Endothelial Barriers.

K.J. Kim and Simon Lewis

Novel Aspects of the regulation and physiology of NHE1

D. Barber and S.F.Pedersen

The SLC26 Transporter Family and Epithelial Function

Michael A. Gray

Two-pore Domain Potassium Channels: Vascular Controls by a Newly Discovered Channel Family.

R.M. Bryan Jr. and Arthur Weston

Physiology in Focus—Novel technologies in Physiology and Medicine: Novel approaches to Structure-Function Relations in Membrane Transport Proteins.

Christopher Miller

Transport-Metabolism Coupling through AMPK

K. Hallows and A. McDonough

ADDITIONAL FEATURED TOPICS OF INTEREST

Novel Ion channels in Neuro-Cardiovascular Regulation:

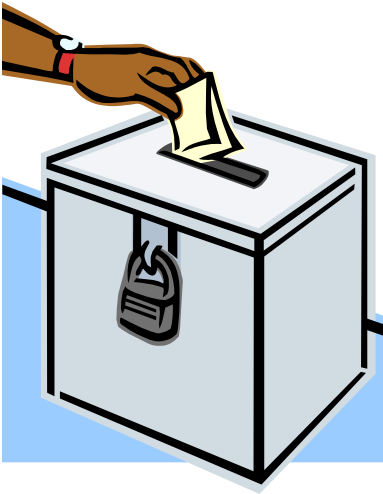
Focus on ASIC and TRP Channels

Francois Abboud

Molecular Physiology of cation-coupled bicarbonate transporters

M.O. Bevensee and I.I. Grichtchenko

ELECTIONS

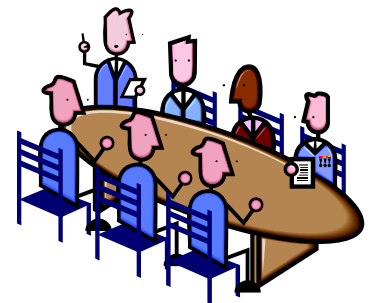


The time is here for the turnover of ETG Steering Committee Members.

The function of the ETG committee is to organize Symposia and Featured Topics for the annual Experimental Biology Meeting. In addition, the steering committee is responsible for two awards; one for Post-doctoral abstracts and one for Pre-doctoral abstracts. Several well qualified experts in the fields of ion channels and transporters have agreed to stand for election to the committee including , Michael Caplan, Rebecca Hughey, Eleanor Lederer, Lisa Satlin, Peter Snyder, and Alan Yu. Elections will take place before Christmas so that the winners will be able to attend the committee meeting next year in Washington D.C. at EB 2007. Please make sure you vote in the election.



Washington Convention Centre



EPITHELIAL TRANSPORT GROUP STEERING COMMITTEE

Chair and APS Representative

Vice Chair

Moshe Levi
University of Colorado at Denver
and Health Sciences Center
4200 E Ninth Avenue, BRB451, Denver CO 80262
Tel (303) 315-1898 Fax (303) 315-0189
moshe.Levi@uchsc.edu

Vice Chair and Newsletter Editor

Neil A. Bradbury
Department of Physiology and Biophysics
Chicago Medical School
3333 Green Bay Road, North Chicago 60064
Tel (847) 578-8362
neil.bradbury@rosalindfranklin.edu

Past Chair

Catherine M. Fuller
Department of Physiology and Biophysics
University of Alabama at Birmingham
1918 University Blvd, Birmingham AL 35294-0005
Tel (205) 934-6085
Fax (205) 934-1445
fuller@physiology.uab.edu

Jonathan D. Kaunitz
UCLA School of Medicine
Wadsworth VA Medical Center, Dept. Medicine
11301 Wilshire Boulevard Bdg 114 Suite 217
Los Angeles CA 90073
Tel (310) 268-3879 Fax (310) 268-4811
jake@ucla.edu

Michael F. Romero
Mayo Clinic College of Medicine
200 First Street SW. Gug9-21D
Rochester MN 55905
office: 507-284-8127 fax: 484-450-0475
E-mail: romero.michael@mayo.edu

